

COASTAL LIVING®

CAYO
ESPANTO,
BELIZE

OVERWATER
(OFF-THE-GRID)
GETAWAYS
PAGE 12

The Blue Issue!

APRIL 2017

AN ODE TO THE
BEAUTY AND BOUNTY
OF THE OCEAN

Turquoise

There's a reason this blue-green stunner is a perennial favorite. (You voted it our "Color of the Year" ... twice!) "It's a bright shade with lots of vitality," says Eiseman. "When we do our color-word associations, invariably when you show turquoise, people think of an amazing ocean scene somewhere in the tropics." But don't overlook its sophisticated side: Darker shades of turquoise or high-contrast pairings give it a bit more gravitas; look for mod geometric patterns to temper its sweetness.

Perennials Fabric's Rough 'N Rowdy Fabric in Bahama Mama, available to the trade; perennialsfabrics.com

Waterhouse Wallhangings Green Wheat Wallpaper in Aqua, \$95 per single roll; waterhousewallhangings.com for showrooms

Thibaut Venus Wallpaper in Aqua, available to the trade; thibautdesign.com

Robert Allen Library Brush Trim in Turquoise, available to the trade; robertalendesign.com



COLLECTORS' CRUSH

Teil Duncan's umbrella-dotted acrylic scenes feel like tributes to the rich shade, and make stellar starting points for planning a room's palette. Hang solo or in a series to anchor a space in turquoise (or even a range of salty blues). See more of the Charleston artist's paintings at teilduncan.com.

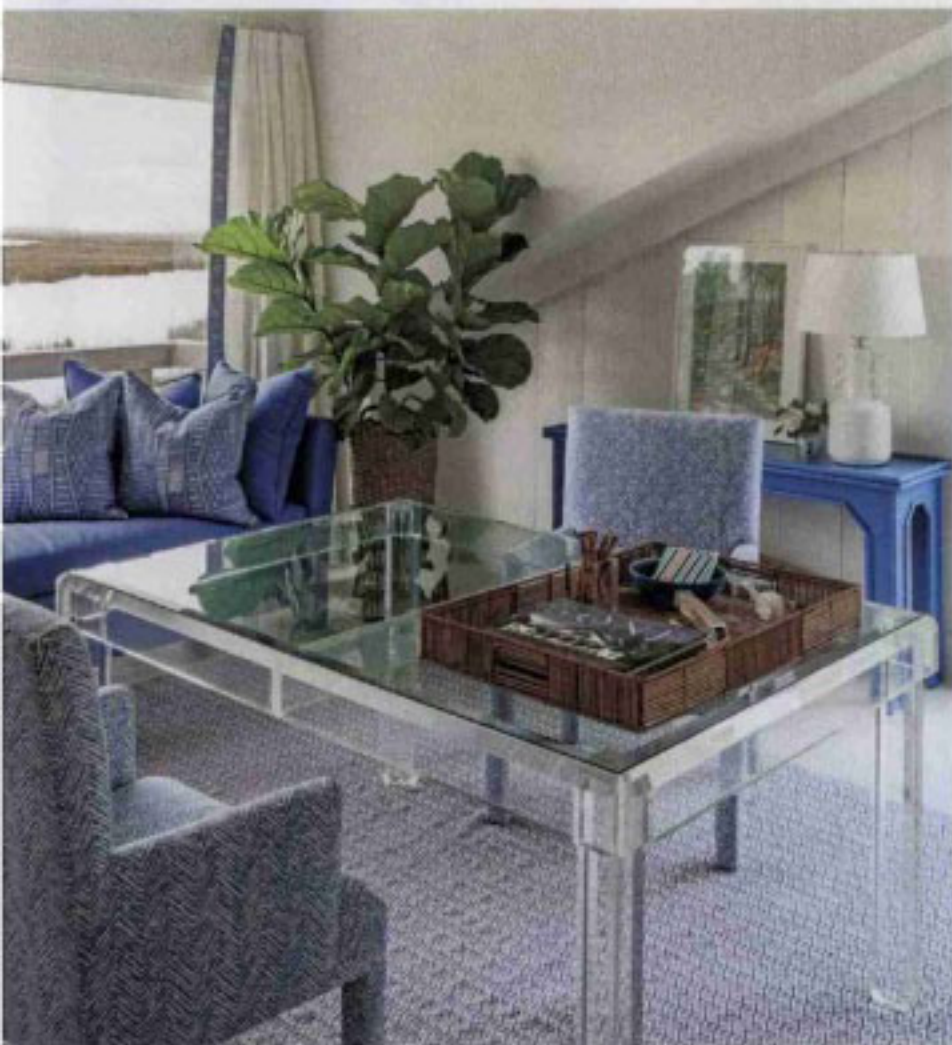
STRIKING PAIRS

Sandy gray puts a fresh spin on the trusty turquoise-white combo, and zippy coral takes turquoise straight to Palm Beach. Try it with black for a super chic setup.



The granite fireplace and bluestone patio overlooking the ocean are original to the property. The teak furniture is by Henry Hall, and the striped cushion fabric is by Perennials.

When designer Meg Braff took on reviving a drab 1960s Sea Island, Georgia, home, her vision was clear: blue, and lots of it! "The house is surrounded on all sides by marsh," she explains. "The low-lying property gives you the feeling that you're being enveloped by the sky, so I wanted to carry that sensation into the decor." But as much as she wanted to make blue the home's central color, she also didn't want it to feel buttoned-up or—worse—predictable. With that in mind, she went room by room with color swatches in hand, studying the light. "The natural light is different in every room, so I wanted to play off of those distinctions," Braff says. The resulting palette is a dynamic spectrum of blues, from vibrant cerulean in the living room to fresh turquoise in the master bedroom. "The key to using varying shades of one color is to make sure they're all the same saturation," notes the designer, who adds that you can identify colors with the same intensity by picking shades that occupy the same position on a paint chip card. Here are more of her design essentials for getting the best out of an all-blue palette.



CHOOSE COLORS ON THE SPOT

"The light is just so different on the water, so it's best to make color decisions onsite to avoid picking one that comes off as either too weak or out of place altogether. I chose this bold shade of blue for the living room after comparing tons of samples in the space. It was so perfect, I built the whole room around it—I had the sofa fabric, curtain trim, and rug all color-matched to that specific shade, which is somewhere between French blue and cerulean."



MIX PRINTS + SIMPLIFY MATERIALS

"People always want to know the secret to incorporating lots of patterns without it going chaotic. One of my favorite tricks is to finish a space with simple materials like Lucite and rattan. I find that even one or two of these accents will give a room definition and take the edge off the prints."



ADD SOME HEAVY METAL

"Gold and brass, especially in the form of door and cabinet hardware, are the ultimate high-contrast accent for a blue-and-white room. Plus, they add midcentury style that's right at home in this refurbished, party-ready wet bar. The sink is a brass hammered piece from Waterworks, and the modern cabinet pulls were Etsy finds."

