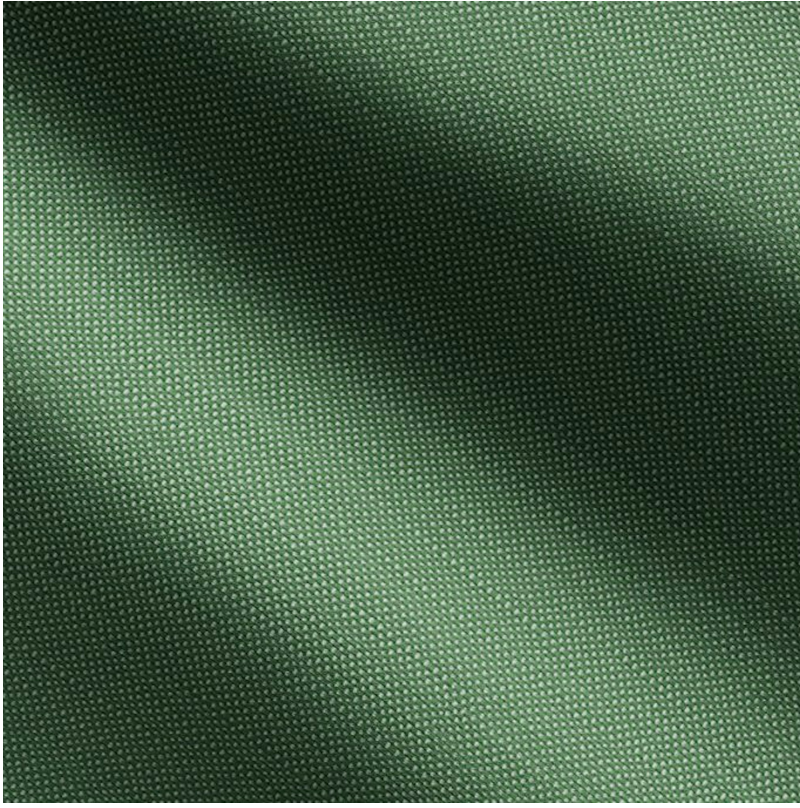


P E R E N N I A L S



Rosemary Ishi

950-248

DETAILS & SPECS

Abrasion	30,000+ Double Rubs
Brush Pill	Class 3.5
UFAC/NFPA 260	PASS
Width	54 in (137 cm)
Weight	10 Oz/sq yd (339 gm/sq m)
Designer	Studio
Collection	2024 C Fall: Timothy Corrigan
Color Family	Green
Color	Rosemary
Vertical Repeat	N/A
Horizontal Repeat	N/A

DESCRIPTION

A favorite medium weight linen-like textured fabric.

All Perennials 100% solution-dyed acrylic fabrics are backed by an industry-leading no-fade guarantee valid for three years from the date of purchase (with the exceptions of prints, which hold a one-year warranty and Cabana™, which holds a five year warranty).

Perennials' technically superior fabrics are fade resistant, mildew- and mold-resistant, bleach cleanable and easily maintained. Be confident when you select fabrics identified by the Perennials Fiber Mark that you will receive a product that lives up to our name: enduring, constant and fun.