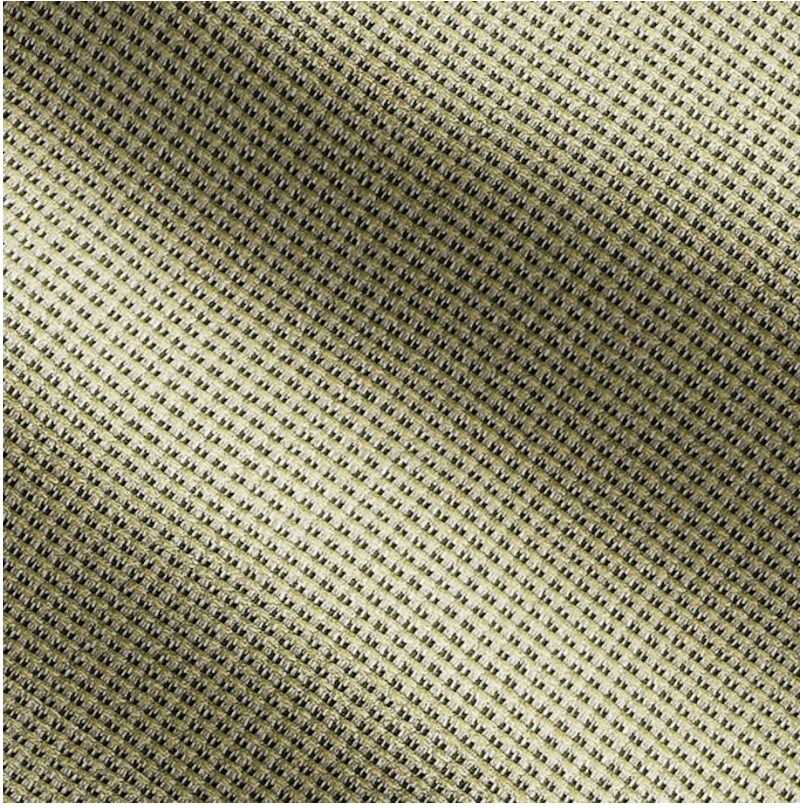


P E R E N N I A L S



Matcha

Common Ground

916-738

DETAILS & SPECS

| | |
|-------------------|------------------------------|
| Abrasion | 25,000 Double Rubs |
| Brush Pill | Class 4.5 |
| UFAC/NFPA 260 | PASS |
| Width | 54 in (137 cm) |
| Weight | 16.4 Oz/sq yd (557 gm/sq m) |
| Designer | Studio |
| Collection | 2025 A Spring: Down to Earth |
| Color Family | Green |
| Color | Matcha |
| Vertical Repeat | N/A |
| Horizontal Repeat | N/A |

DESCRIPTION

This reversible design showcases a multi-color grid texture that offers depth and dimension. With a unique interplay of tones, the subtle grid patterning allows for versatile styling options and a dynamic visual experience.

All Perennials 100% solution-dyed acrylic fabrics are backed by an industry-leading no-fade guarantee valid for three years from the date of purchase (with the exceptions of prints, which hold a one-year warranty and Cabana™, which holds a five year warranty).

Perennials' technically superior fabrics are fade resistant, mildew- and mold-resistant, bleach cleanable and easily maintained. Be confident when you select fabrics identified by the Perennials Fiber Mark that you will receive a product that lives up to our name: enduring, constant and fun.