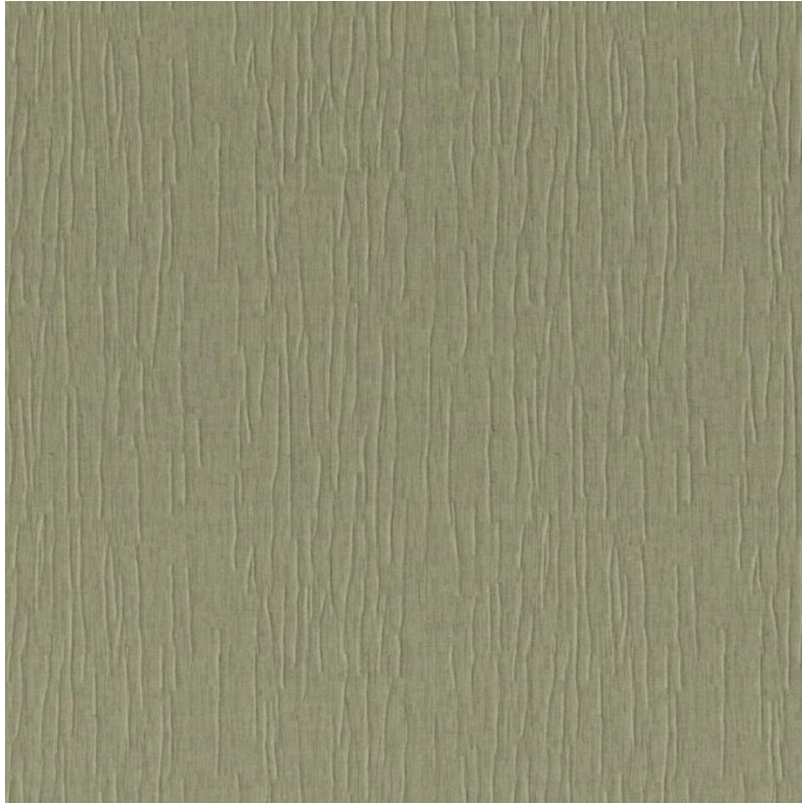


P E R E N N I A L S



Sage Crinkle In Time

PT106-262

DETAILS & SPECS

Width	36"
Match	Random
Material	Hand-Crinkled Nonwoven
Backing	Non-Woven
Maintenance	Soft Dry Brush, Wet Removable
Fire Rating	Class B
Potential Lead	No
Credit	
Designer	Studio
Collection	2025 A Spring: Down to Earth
Color	Sage
Color Family	Green
Vertical Repeat	None

DESCRIPTION

Elevate your spaces with our natural grass cloth, Tied Up. Each roll showcases the unique variations of grass fibers with added knotting texture, resulting in a one-of-a-kind look that adds depth and warmth to your walls. Ideal for living rooms, bedrooms, or creative workspaces, Tied Up not only beautifies your environment but also promotes a sense of tranquility and connection to the outdoors. Tied up is available in 5 colorways: Cove, Bluestone, Patina, Rusty, and Beach.