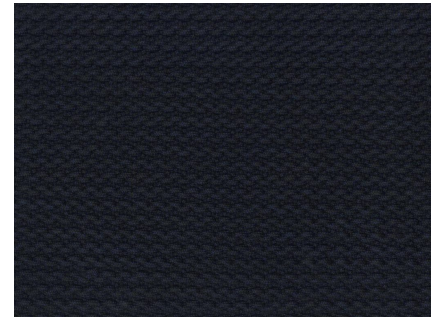
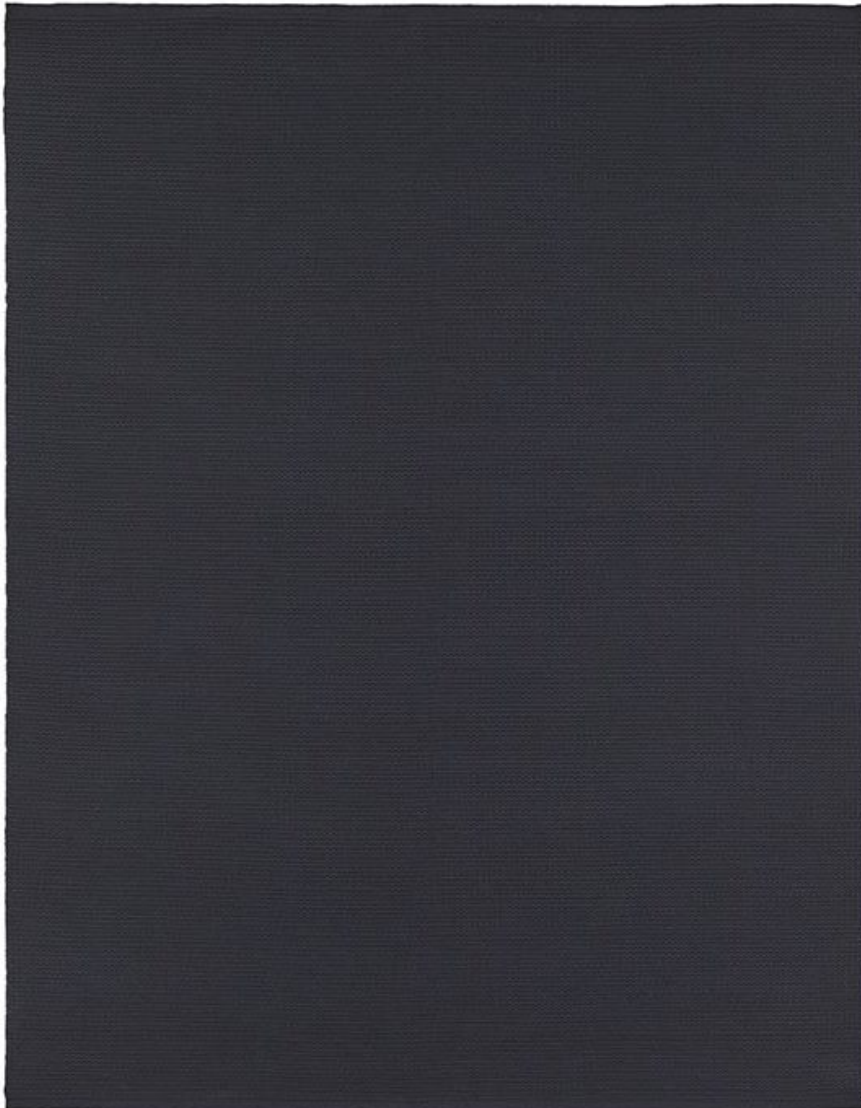


## Tricot Flatwoven

AFTER MIDNIGHT



**FW239-356**

Tricot Flatwoven

**Designer** Vincent Van Duysen

**Construction** Flatwoven

**Colorway** AFTER MIDNIGHT

**Collection** 2021 B Fall: Vincent van  
Duysen

Perennials' Flatwoven artisanal rugs feature exceptional designs, subtle color blending and an unbelievably soft feel. They include binding on the horizontal edges and the selvages are left visible to show the craftsmanship of each handwoven rug. These rugs are ideal for use indoors or out.

