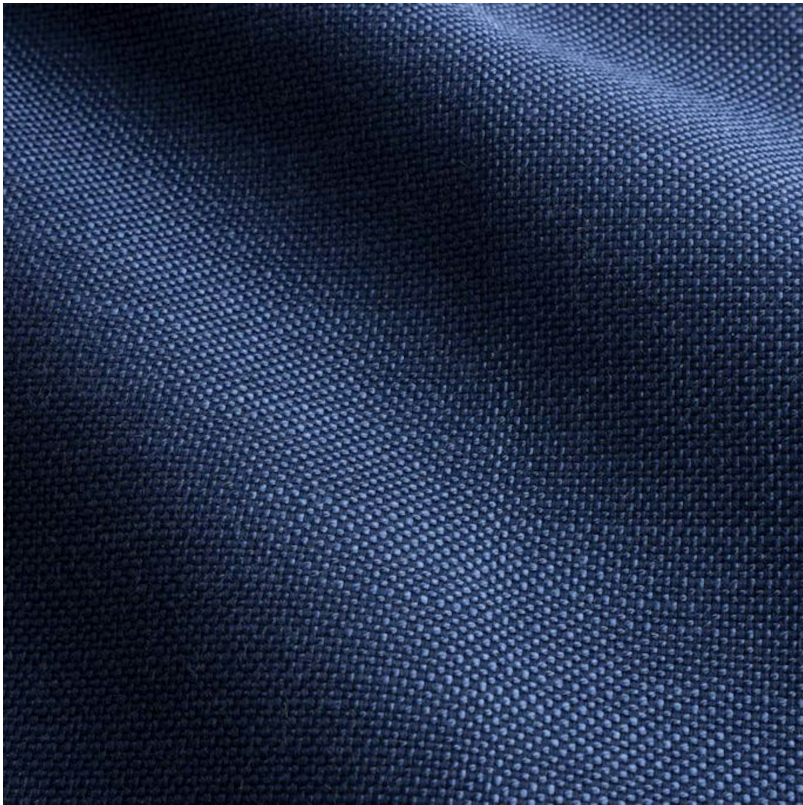


PERENNIALS



Blue Jean Ishi

950-501

DETAILS & SPECS

| | |
|-------------------|-----------------------------|
| Abrasion | 30,000+ Double Rubs |
| Brush Pill | Class 3.5 |
| Width | 54 in (137 cm) |
| Weight | 10 Oz/sq yd (339 gm/sq m) |
| Designer | Studio |
| Collection | 2018 B Fall: William Morris |
| Color Family | Dark Blue |
| Color | Blue Jean |
| Vertical Repeat | N/A |
| Horizontal Repeat | N/A |

DESCRIPTION

A favorite medium weight linen-like textured fabric.

All Perennials 100% solution-dyed acrylic fabrics are backed by an industry-leading no-fade guarantee valid for three years from the date of purchase (with the exceptions of prints, which hold a one-year warranty and Cabana™, which holds a five year warranty).

Perennials' technically superior fabrics are fade resistant, mildew- and mold-resistant, bleach cleanable and easily maintained. Be confident when you select fabrics identified by the Perennials Fiber Mark that you will receive a product that lives up to our name: enduring, constant and fun.