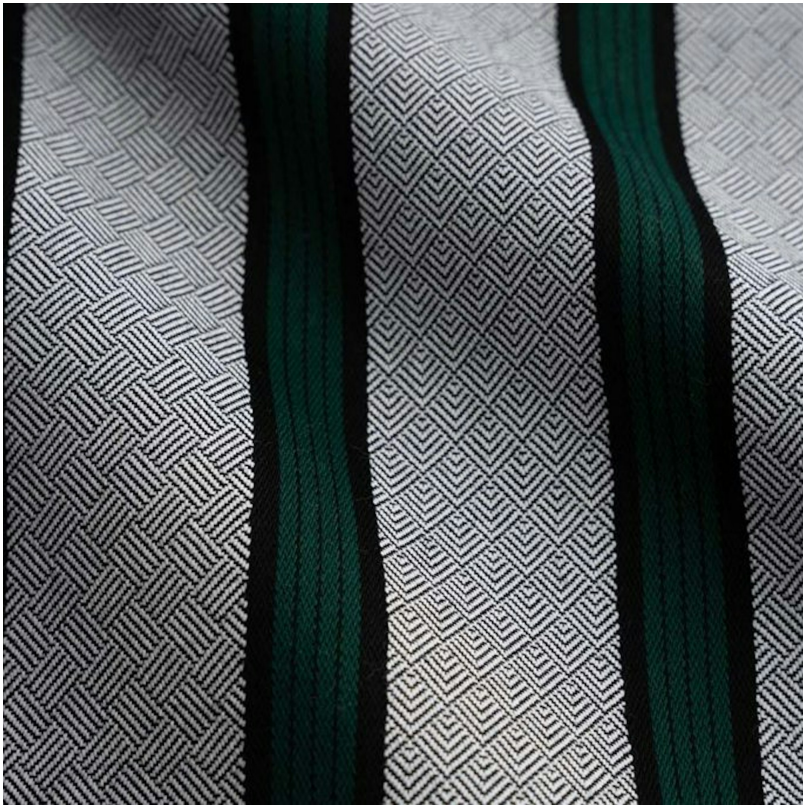


# PERENNIALS



## Emerald Kabuki Stripe

728-347

### DETAILS & SPECS

Abrasion	15,000 double rubs
Brush Pill	Class 5
Width	54 in (137 cm)
Weight	8.1 Oz/sq yd (275 gm/sq m)
Designer	Studio
Collection	2017 B Fall: Here, There and Everywhere
Color Family	Green
Color	Emerald
Vertical Repeat	.5 IN (1.3 CM)
Horizontal Repeat	5 IN (12.7 CM)

### DESCRIPTION

Japanese inspired satin stripe with intricately entwined patterned background.

All Perennials 100% solution-dyed acrylic fabrics are backed by an industry-leading no-fade guarantee valid for three years from the date of purchase (with the exceptions of prints, which hold a one-year warranty and Cabana™, which holds a five year warranty).

Perennials' technically superior fabrics are fade resistant, mildew- and mold-resistant, bleach cleanable and easily maintained. Be confident when you select fabrics identified by the Perennials Fiber Mark that you will receive a product that lives up to our name: enduring, constant and fun.