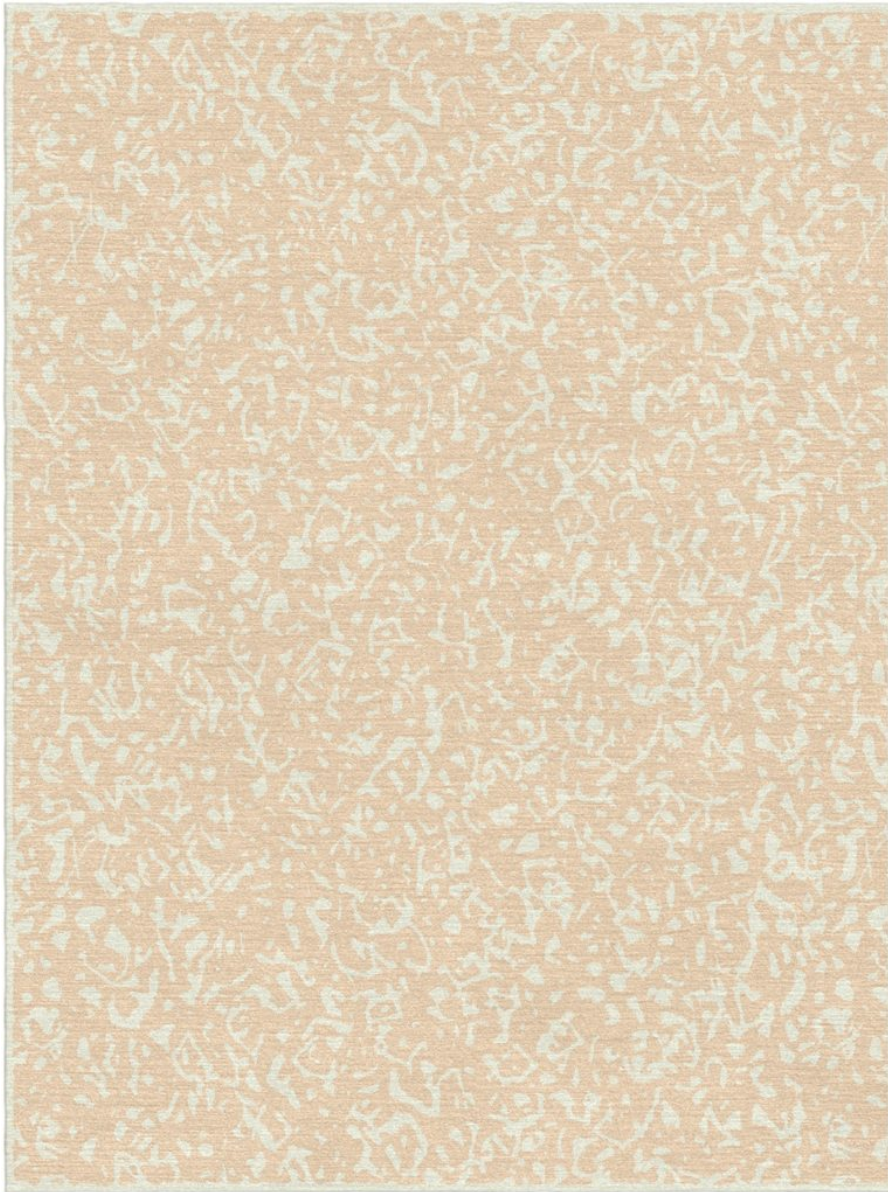


P E R E N N I A L S<sup>®</sup>

LUXURY PERFORMANCE FABRICS

## Abstracted Tibetan Knot

CONCH



**TK334-131**

Abstracted Tibetan Knot

**Designer** Porter Teleo

**Construction** Tibetan Knot

**Colorway** CONCH

**Collection** 2016 A Spring: Porter Teleo

Hand knotted, 80 knots per square inch.

**Pom Colors**



2

191

